

PEAK Class 101:  
**3 steps to set up**  
your home wireless network  
with PEAK wireless product.



You can use a wireless network to share Internet access, files, printers, and more. Or you can use it to surf the Web while you're sitting on your couch or in your yard. Plus, it's easier to install than you think.

**There are 3 steps to creating a wireless network:**

- 1 Connect your wireless router
- 2 Configure your wireless router
- 3 Connect your computers

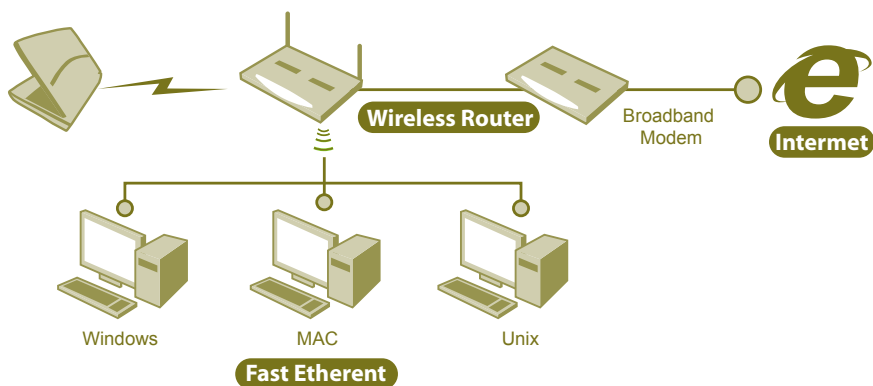
For **Windows XP** users, **Windows XP Service Pack 2** is not required for wireless networking, but it does make things much easier. Service Pack 2 also helps protect you against hackers, worms, and other Internet intruders. To install Service Pack 2, visit the [Protect Your PC site](#).

**1 Connecting your wireless router**

Since you'll be temporarily disconnected from the Internet, print these instructions before you go any further.

First, locate your cable modem or DSL modem and unplug it to turn it off. Next, connect your [PEAK Wireless 54Mbps B/Band Router](#) to your modem. Your modem should stay connected directly to the Internet. Later, after you've hooked everything up, your computer will wirelessly connect to your router, and the router will send communications through your modem to the Internet.

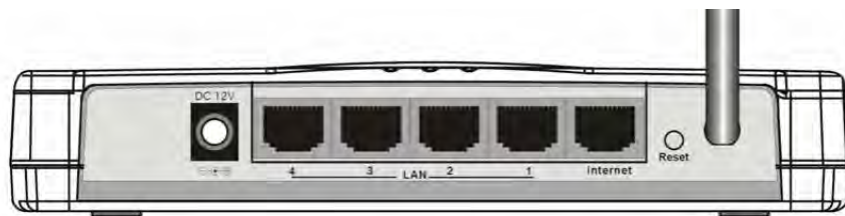
**Wireless LAN**



Next, connect your router to your modem:

**Note:** The instructions below apply to a PEAK Wireless 54Mbps B/Band Router. The ports on your router may be labeled differently, and the images may look different on your router. Check the documentation that came with your equipment for additional assistance.





- **If you currently have your computer connected directly to your modem:**

Unplug the network cable from the back of your computer, and plug it into the port labeled "Internet" port on the back of your PEAK Wireless 54Mbps B/Band Router.

- **If you do not currently have a computer connected to the Internet:**

Plug one end of a network cable (included with your router) into your modem, and plug the other end of the network cable into the "Internet" port on your PEAK Wireless 54Mbps B/Band Router.

- **If you currently have your computer connected to a router:**

Unplug the network cable connected to the "Internet," "WAN," or "WLAN" port from your current router, and plug this end of the cable into the "Internet" port on your [PEAK Wireless 54Mbps B/Band Router](#). Then, unplug any other network cables, and plug them into the LAN ports on your [PEAK Wireless 54Mbps B/Band Router](#). You no longer need your original router, because your new [PEAK Wireless 54Mbps B/Band Router](#) replaces it.

**Power**   **Internet**   **WALN**   **1**   **2**   **3**   **4**   **LAN**   **Activity**

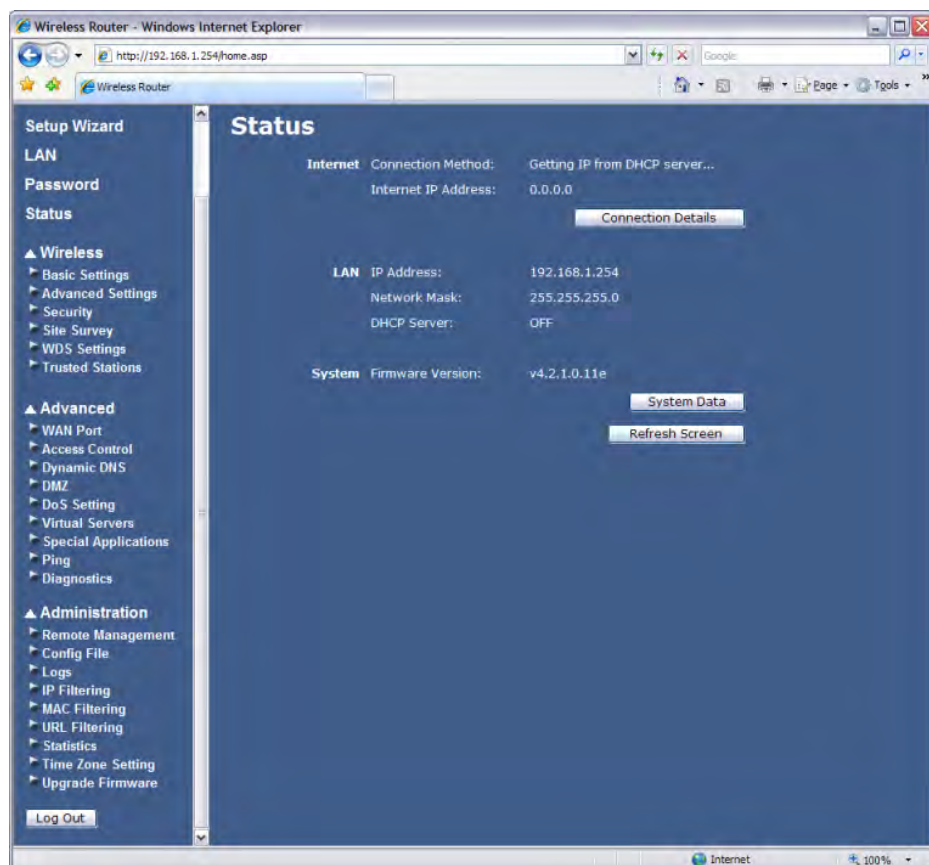


Next, plug in and turn on your cable or DSL modem. Wait a few minutes to give it time to connect to the Internet, and then plug in and turn on your wireless router. After a minute, the Power and Internet light on your PEAK Wireless 54Mbps B/Band Router should light up, indicating that it has successfully connected to your modem.

## 2 Configure your wireless router

Using the network cable that came with your wireless router, you should temporarily connect your computer to one of the open LAN ports on your PEAK Wireless 54Mbps B/Band Router (any port that isn't labeled "Internet"). If you need to, turn your computer on. It should automatically connect to your router.

Next, open Internet Explorer and type in the address to configure your router. In this case the address is "<http://192.168.1.254>". You will be prompted for username and password. The username will be "admin" and please leave the password blank.



The Right Choice

[www.peakhardware.com](http://www.peakhardware.com)

Internet Explorer will show your router's configuration page. Most of the default settings should be fine.

**Note:** Depending on your WAN Access Type (Static IP, DHCP, PPPoE or PPTP). You may have different setting. Please check your user manual and your ISP for more detail.

#### However, you should configure five things:

- ▶ 1. Your wireless network name, known as the SSID. This name identifies your network. You should choose something unique that none of your neighbors will be using.

Where to setup? Wireless -> Basic Settings

- ▶ 2. Wireless encryption (WEP) or Wi-Fi Protected Access (WPA), which helps protect your wireless network. For most routers, you will provide a pass phrase that your router uses to generate several keys. Make sure your pass phrase is unique and long (you don't need to memorize it).

Where to setup? Wireless -> Security

- ▶ 3. Your administrative password, which controls your wireless network. Just like any other password, it should not be a word that you can find in the dictionary, and it should be a combination of letters, numbers, and symbols. Be sure you can remember this password, because you'll need it if you ever have to change your router's settings.

Where to setup? Password

After each configuration setting, be sure to click "Save" to save your changes. Now, you should disconnect the network cable from your computer.

#### ⊕ Configure your wireless router

If your computer does not have wireless network support built in, plug your [USB 2.0 Network Adaptor](#) into your USB port, insert the CardBus Network Adaptor into an empty Cardbus slot, or insert the PCI Network Adaptor into an empty PCI slot. In this case, we will use our [PEAK II 802.11b/g Wireless LAN USB2.0 Adaptor](#) for the following instruction.

Windows XP will automatically detect the new adapter, and prompt you to insert the CD that came with your adapter. The on-screen instructions will guide you through the installation process.

**Note:** The steps below only apply if you're using Windows XP Service Pack 2. If you're running Windows XP and you don't have Service Pack 2 yet, plug your computer into your wireless router and download and install Service Pack 2 from the [Protect Your PC](#) site. Windows XP should show an icon with a notification that says it has found a wireless network.



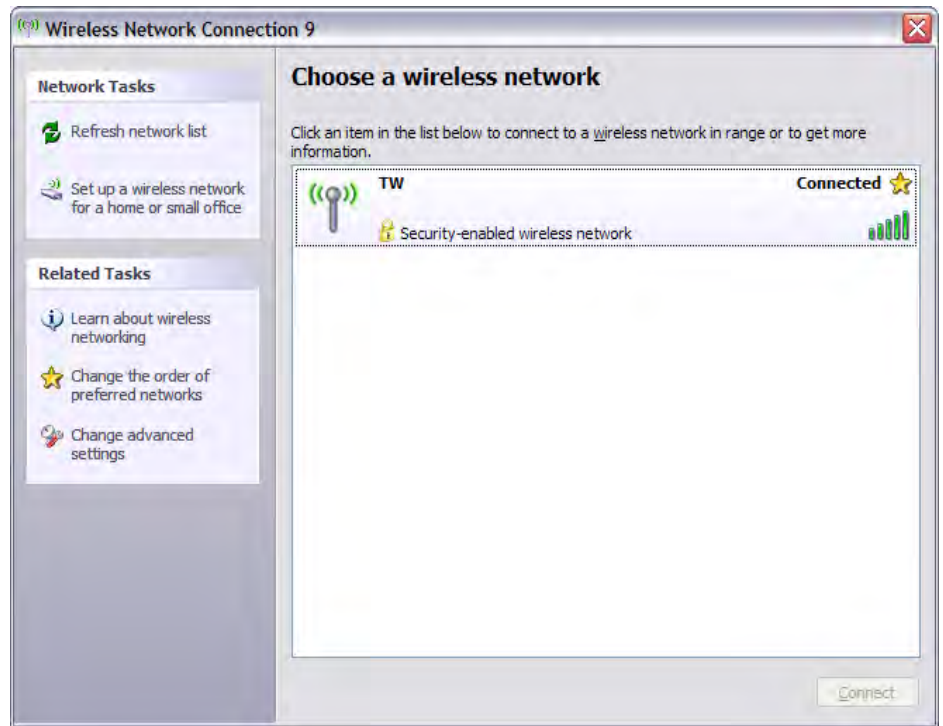
#### Follow these steps to connect your computer to your wireless network:

- ▶ 1. Right-click the wireless network icon in the lower-right corner of your screen, and then click [View Available Wireless Networks](#). If you run into any problems, consult the documentation that came with your PEAK II 802.11b/g Wireless LAN USB2.0 Adaptor and you are welcome to send an e-mail to our tech support
- ▶ 2. The Wireless Network Connection window should appear and you should see your wireless network listed with the network name you chose. If you don't see your network, click Refresh in the upper-left corner. Click your network, and then click Connect in the lower-right corner.



The Right Choice

[www.peakhardware.com](http://www.peakhardware.com)



- ▶ 3. Windows XP prompts you to enter a key. Type the encryption key that you wrote down earlier in both the Network key and Confirm network key boxes, and then click Connect.
- ▶ 4. The Wireless Network Connection window should appear and you should see your wireless network listed with the network name you chose. If you don't see your network, click Refresh network list in the upper-left corner. Click your network, and then click Connect in the lower-right corner.

**Note:** If the Wireless Network Connection window continues to show **Acquiring Network Address**, you may have miss typed the encryption key.



The Right Choice

[www.peakhardware.com](http://www.peakhardware.com)