

## PEAK Class 101: What is Bluetooth and what can I do with it?

Bluetooth is a short-range, wireless transmission technology which allows devices to "pair-up" and exchange data. It's a robust communication system that operates at the unlicensed 2.4GHz frequency to provide a safe yet efficient protocol. With a maximum effective range of 100 metres (High-power Bluetooth), Bluetooth is the ideal short-range transmission standard for today.

Before you start enjoying the benefits Bluetooth has to offer, you'll need to "pair-up" the host device and your Bluetooth-enabled peripherals first. You can connect multiple peripherals to one host controller. You'll also need to set up a passcode (or password) for each device as well. You don't have to repeat the pairing process every time to exchange data, as the host controller will usually memorize the passcode and recognise the peripherals automatically when the Bluetooth function is turned on. Follow the instructions below to establish your first Bluetooth connection.

### Requirements:

- A Bluetooth dongle which turns your computer into a Bluetooth host device
- Bluetooth-ready peripherals (cellphone, headset, keyboard, or even printers).
- 10 minutes of your busy schedule.



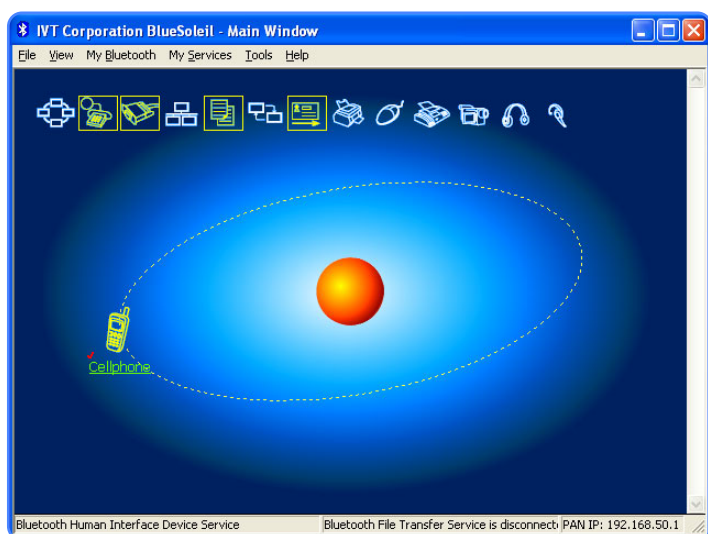
### Step 1: Install your Bluetooth dongle

- As with any other component, you'll need a device driver for your Bluetooth dongle. Simply insert the driver/software CD into your CD-ROM drive and follow the simple on-screen instructions to install the Bluetooth dongle. The Bluetooth management software will also be installed on to your computer during the installation process.
- You'll see the distinctive Bluetooth icon appear at the bottom right hand corner of your screen



### Step 2: Pairing your Bluetooth devices

- Once the installation has been completed, let's start the Bluetooth software.
- Say you want to download one picture taken by your cell phone to your computer. You'll need to click on **My Bluetooth** → **Bluetooth device discovery** (make sure your cellphone's Bluetooth function is turned on)
- You'll be asked to enter a passcode. You can create whatever you like (to make it simple, we'll use "0000" as our passcode.
- Enter "0000" on your computer keyboard and press enter
- Check your cell phone: you'll be prompted to enter the passcode again. Type in the same code (0000) on your cellphone keypad and press Enter.
- You're done. You can now exchange data between your computer and your cellphone.



The same process can be applied to your cell phone and its Bluetooth headset. The pairing has to be established before the two devices can start to communicate with each other.

PEAK offers a wide range of Bluetooth dongles. For more information, please visit our website at [www.peakhardware.com](http://www.peakhardware.com)



**The Right Choice**  
[www.peakhardware.com](http://www.peakhardware.com)